

# Agenda

- **SEND Implementation overview**
- **20:20 Vision for SEND**
- **Service updates**
- **Q&A**

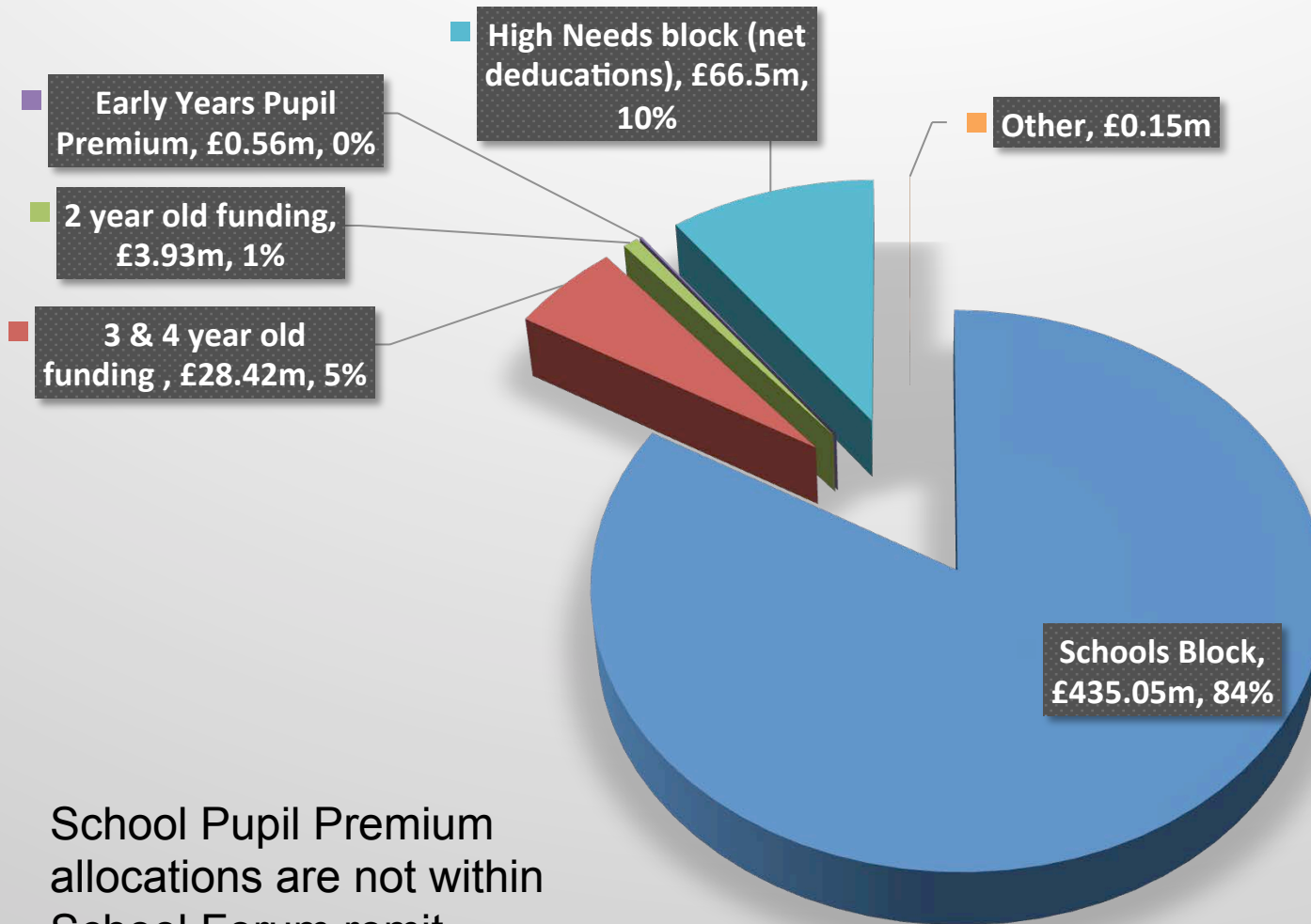


# SEND Implementation Northants update

- **Funding**
- **New referrals**
- **Transfers from statements to EHC Plans**
- **Successes and Challenges**



# Northamptonshire DSG 2016/17 £536m



School Pupil Premium allocations are not within School Forum remit.



# What High Needs Block covers

- **Special schools – total cost (26m)**
- **Hospital Outreach Education**
- **Alternative provision**
- **High needs top-ups- early years, schools, colleges incl EHC Plans**
- **Out of County placements (9m – 292 CYP)**
- **Centralised services – EHC, part Educational Psychology, Autism Outreach, Early Years & Portage etc**

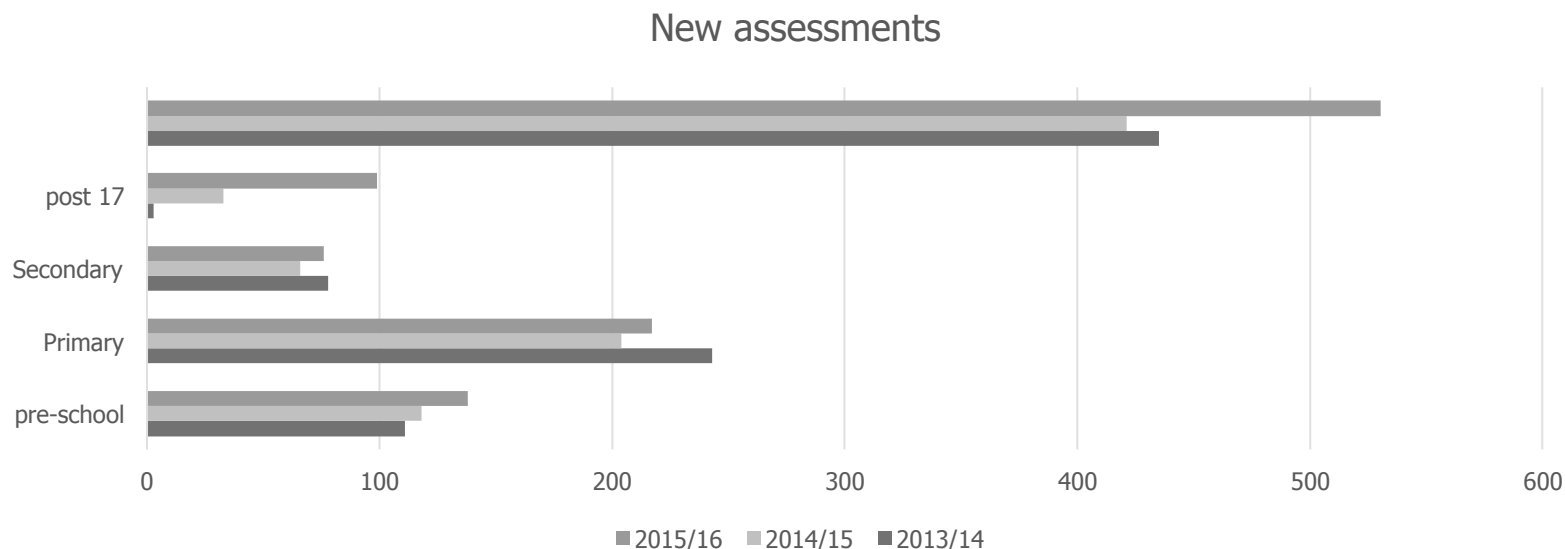


# High Needs Funding applications - schools

Column1	2013/14	2014/15	2015/16	2016/17*
Number of referrals			275	520
Funded from HNB	158	173	358	87
%age funded		63	69	
Funding	241,546	568,414	1,305,609	255,068
Cumulative**		809,960	1,952,704	1,951,001



# New referrals



	Pre-school	Primary	Secondary	Post 17	Total
2013/14	111	243	78	3	435
2014/15	118	204	66	33	421
2015/16	138	21778	76	99	530



# Transfers

1 <sup>st</sup> Year 2014-15	2 <sup>nd</sup> Year 2015-16	3 <sup>rd</sup> Year 2016-17	4 <sup>th</sup> Year 2017-18
-1 (N2)	0	1	2
0	1	2	3
1	2	3	4
2	3	4	5
3	4	5	6
4	5	6	7
5	6	7	8
6	7	8	9
7	8	9	10
8	9	10	11
9	10	11	
10	11		
11	13		
13 & 14			



# Number of statements to transfer

- **2014/15 – 1070**
- **2015/16 – 1150**
- **2016/17 – 813**
- **2017/18 – 552 (by 31/3/18)**





# Successes and Challenges

- + **Strong person centred ethos in new team**
- + **Managing the conversion/assessment pressures**
- + **Building partnerships**
  
- **Budget**
- **Inspection readiness**
- **Not yet good enough**
  - Joint understanding/working
  - Joint commissioning
  - Understanding of Outcomes
  - EHC Plans . . . .



# High needs - Challenges

## Financial pressures

- Existing pressure on high needs budgets
- Requests for high needs spend in early years and 19-25
- Pressure on wider budgets
- Challenge of implementation of change

## Importance of early investment

- Good preparation for adulthood for children and young people with SEN aged 0-25 will save on whole-life health and care costs



# 20:20 Vision for SEND



**HOLD  
THE DATES:**

**14 March 2017**

**22 March 2017**

**30 March 2017**



**20:20 Vision for Special  
Educational Needs and  
Disability (SEND) in  
Northamptonshire**  
*All About Futures*

- Are you a young person with SEND?
- Do you care for or work with young people with SEND?
- Are you a parent of a child/young person with SEND?

**Then help create our vision, strategy, and action plan for SEND support**

- Unique local area consultation opportunity
- Influence the services for SEND in Northamptonshire
- Facilitated discussion groups across all ages
- Education, Health, and Care priorities

**Buckingham Suite, Park Inn by Radisson,  
Silver Street, Northampton NN1 2TA**

For more information, please email:  
[localoffer@northamptonshire.gov.uk](mailto:localoffer@northamptonshire.gov.uk)  
or visit: [www.northamptonshire.gov.uk/2020vision](http://www.northamptonshire.gov.uk/2020vision)

  
Nene Clinical Commissioning Group

 Northamptonshire  
County Council



# Service Updates



# The Local Offer

- **Kathy Forsdyke**



# Specialist Support Service and Sensory Impairment Service in Northamptonshire County Council



# **Specialist Support Service for Children with Autism and/or SEND (SSS)**

**New service which started on 1.9.16 but front-facing changes implemented from 1<sup>st</sup> Jan 2017.**

**Joining of three previous teams:**

**Autism Outreach Team**

**Early Help for Disabled Children's Team**

**Portage and Early Years SEND Team**





## **Organised in 4 locality areas:**

- **Daventry and South Northants**
- **Kettering and Corby**
- **Northampton**
- **Wellingborough and East Northants**



- **Each locality has an Area Manager, 1 Senior Practitioner and a number of Practitioners and Early Help Caseworkers who specialise in working with children of different ages:**
- **Early Years**
- **Primary**
- **Secondary**

**New Interim Service Manager for SSS and Sensory Impairment Service starting November 2016 – Anne Wakeling**



# What's happening now?

**New processes are currently being designed for the new service which will be implemented from January 2017.**

**UNTIL JANUARY ALL REMAINS THE SAME**

**Support includes:**

- **Portage Home Teaching**
- **Individual advice and support to parents/carers**
- **ASD support in home and school**
- **Early Help for Disabled Children**



# What's in the new service?

**The new service has been improved to:**

- **Allow access to a wider group of children e.g. those without diagnosis.**
- **Significant increase of front-line staff.**
- **Extending opportunities to attend workshops/ training for parents (and professionals).**
- **Clear information about access and eligibility.**



# Where to find out more

**Autism Outreach- through Education and Inclusion Partnerships page of NCC website -**

**<http://www.northamptonshire.gov.uk/en/councilservices/EducationandLearning/Parents/Pages/Education-Entitlement-Service.aspx>**

**EHDC – through Access to Support via your Early Help Co-ordinator -**

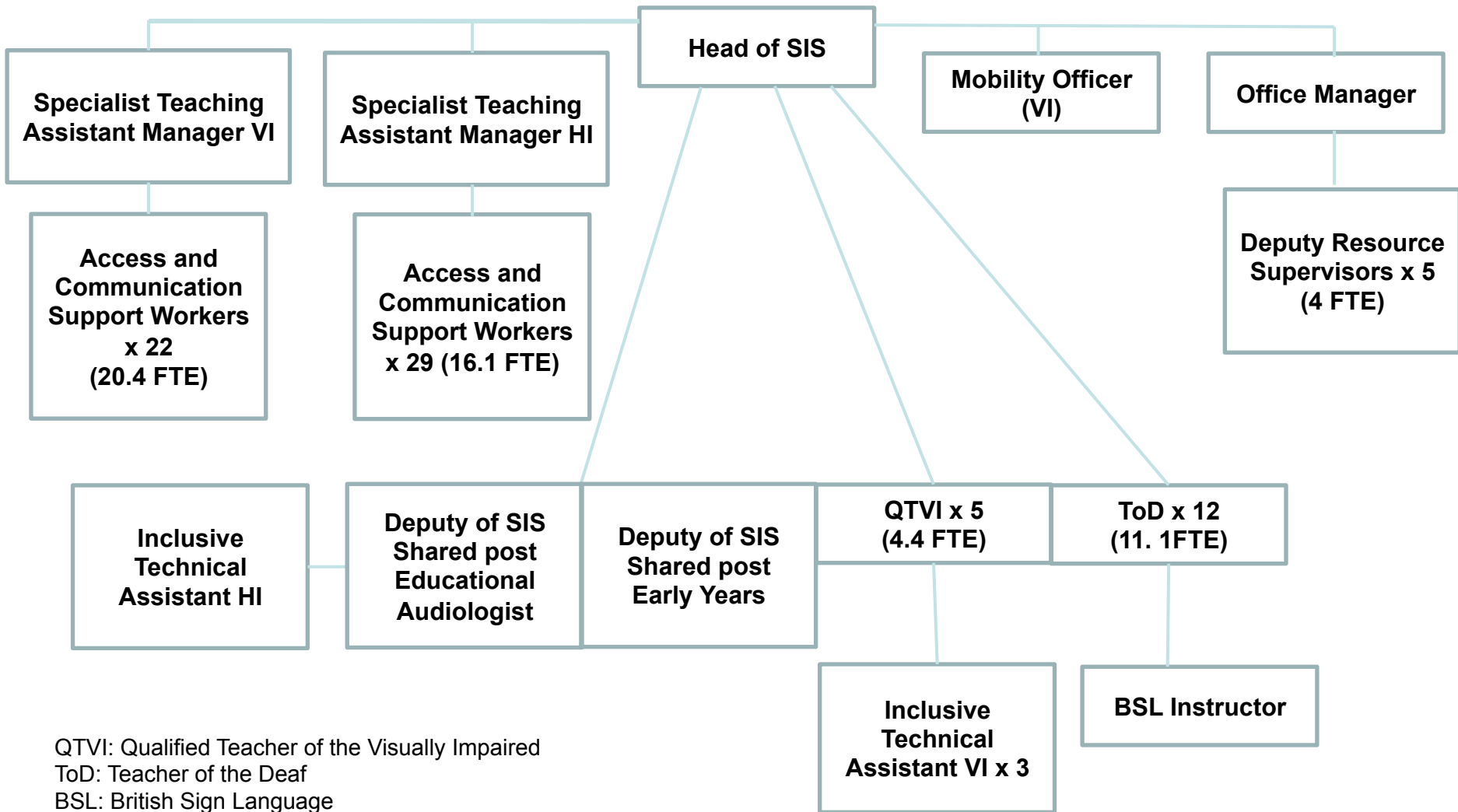
**<http://www3.northamptonshire.gov.uk/contact-early-help-support-MASH.aspx>**

**Portage – through Portage page of NCC website -**

**<http://www.northamptonshire.gov.uk/Portage.aspx>**



# Sensory Impairment Service



QTVI: Qualified Teacher of the Visually Impaired

ToD: Teacher of the Deaf

BSL: British Sign Language



# IASS



# Q & A

